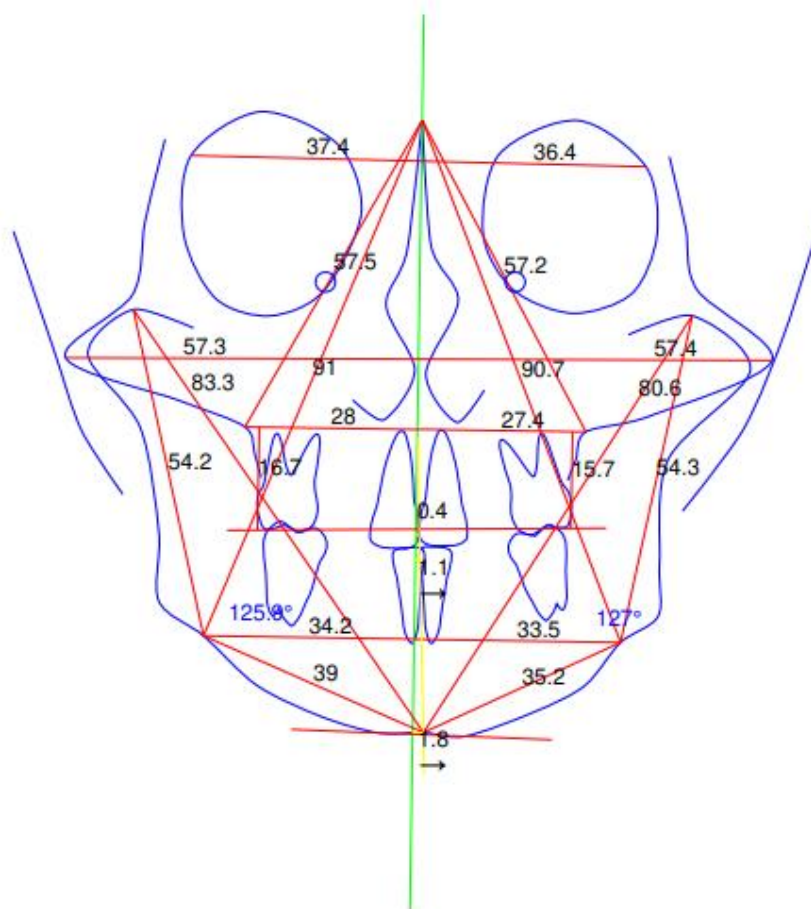
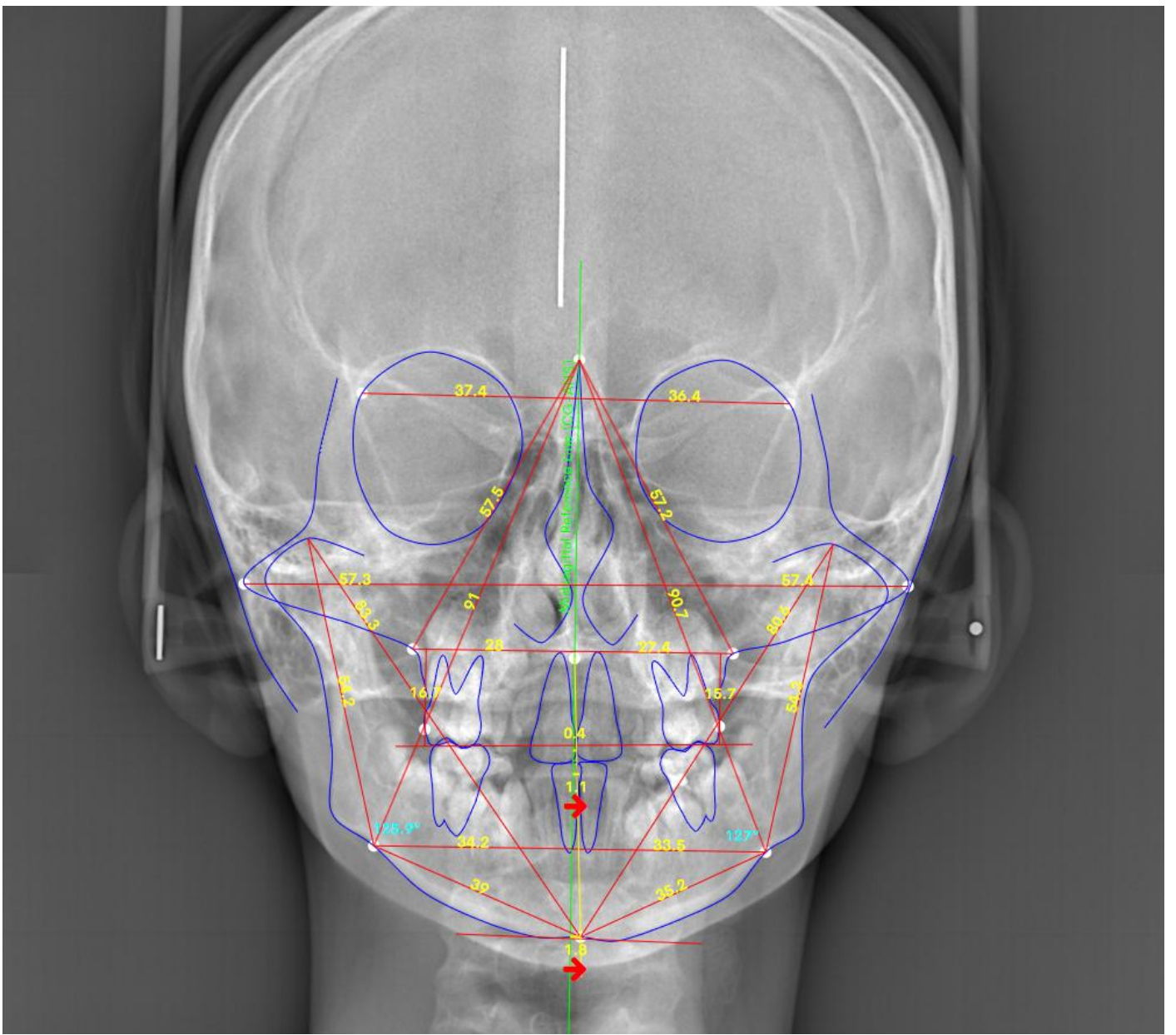




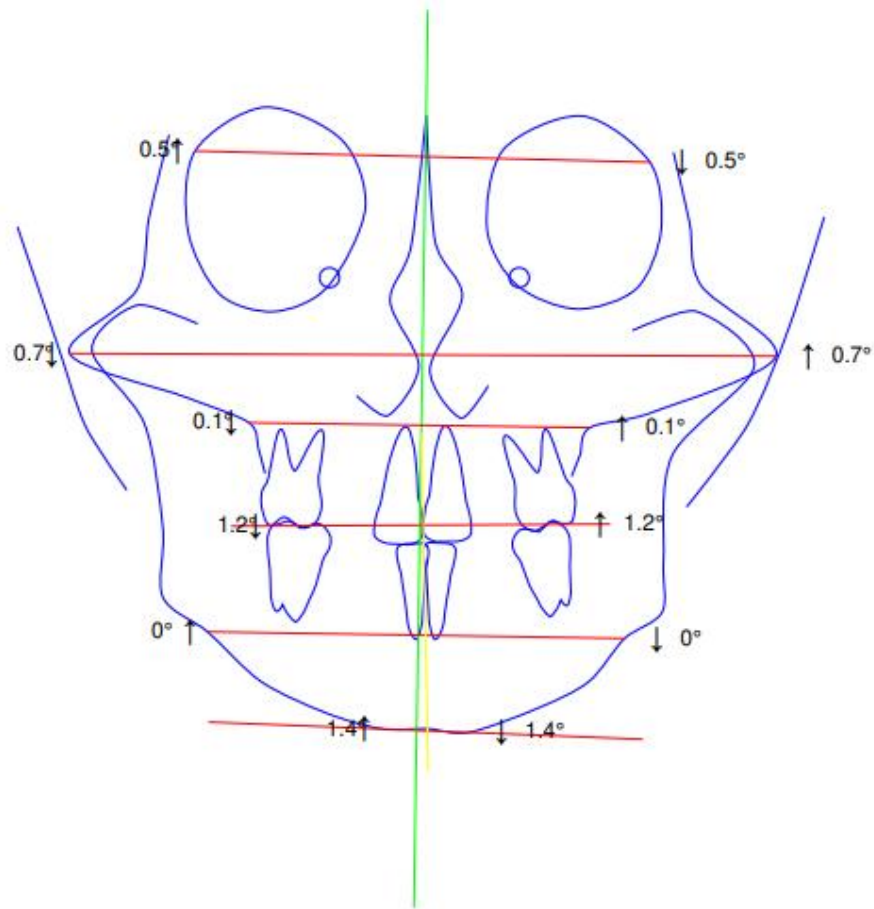
### Grummons Analysis



Distance from Midline	Right		Left	Diff.	Mandibular Triangle	Right		Left	Diff.
Z distance	37.4	>	36.4	1.0	Co-Ag distance	54.2	<	54.3	0.1
Za distance	57.3	<	57.4	0.1	Co-Me distance	83.3	>	80.6	2.7
J distance	28.0	>	27.4	0.6	Me-Ag distance	39.0	>	35.2	3.8
Ag distance	34.2	>	33.5	0.7	Midline Analysis		Value	Direction	
Measurement Item	Right		Left	Diff.	Upper dental midline dev.	0.4		→	
Ag angle	125.9°	<	127.0°	1.1°	Lower dental midline dev.	1.1		→	
U6 vertical height from J	16.7	>	15.7	1.0	Menton deviation	1.8		→	



## Canting Analysis



Measurement Plane	Canting	Direction
Inter-Zygomatofrontal suture plane	0.5°	↑ ↓
Inter-Zygomatoc arch plane	0.7°	↓ ↑
Inter-Jugal plane	0.1°	↓ ↑
Occlusal plane	1.2°	↓ ↑
Inter-Antegonial plane	0.0°	↑ ↓
Menton plane	1.4°	↑ ↓

